

Hurricane keratopathy

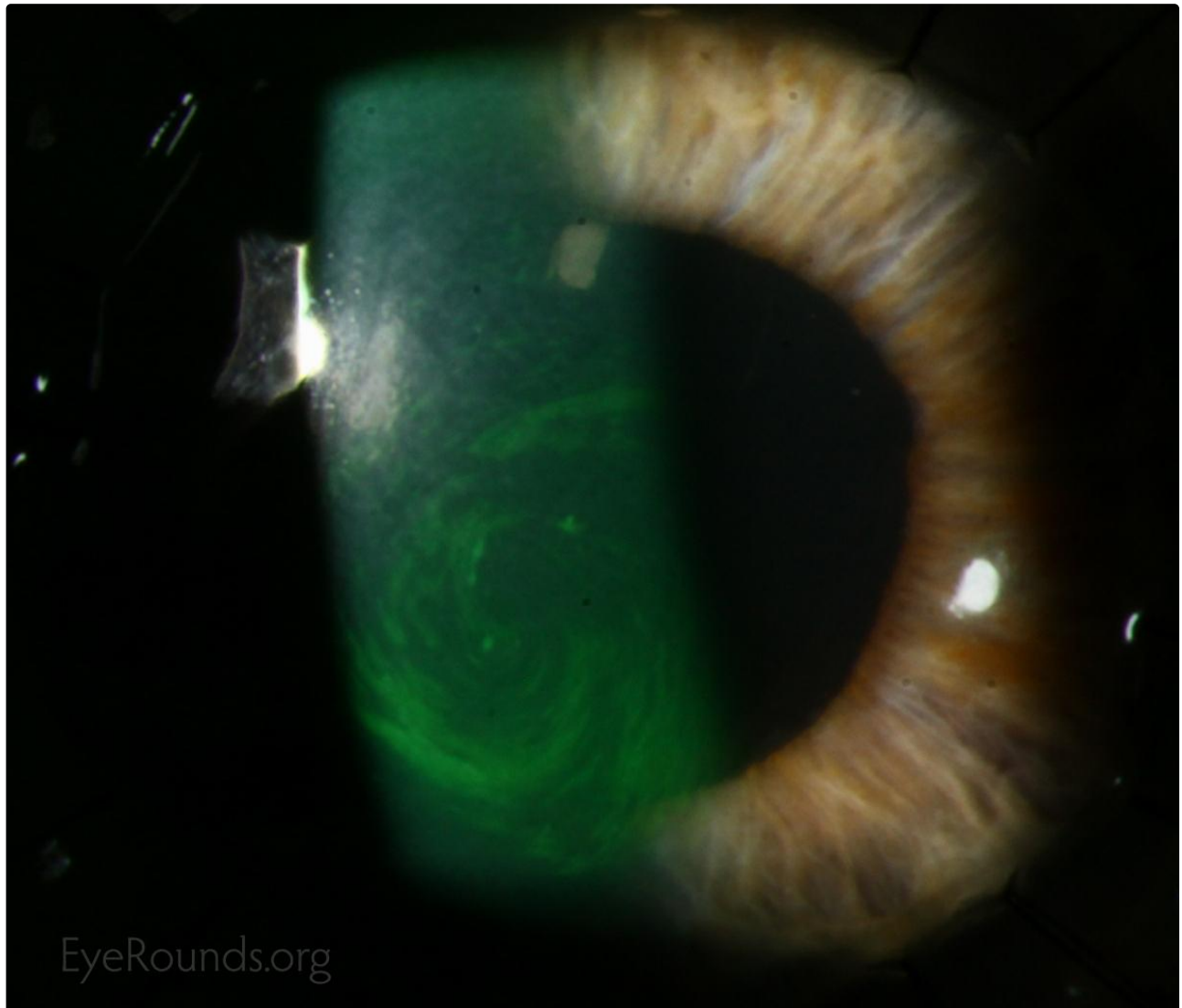
Category(ies): Cornea

Contributor: [Jesse Vislisel, MD](#); Matt Raecker, MD

Photographer: Cindy Montague, CRA



Hurricane keratopathy occurs in situations of high corneal epithelial cell turnover and migration. In this condition, the centripetal pattern of cell migration from the corneal limbus becomes visible. The cells usually make a clockwise whorl or vortex pattern as they move centrally. It has been hypothesized by Dua that this is due to the effects of electromagnetic forces on the eye. This epitheliopathy typically disappears when epithelial turnover and migration slows to normal rates.

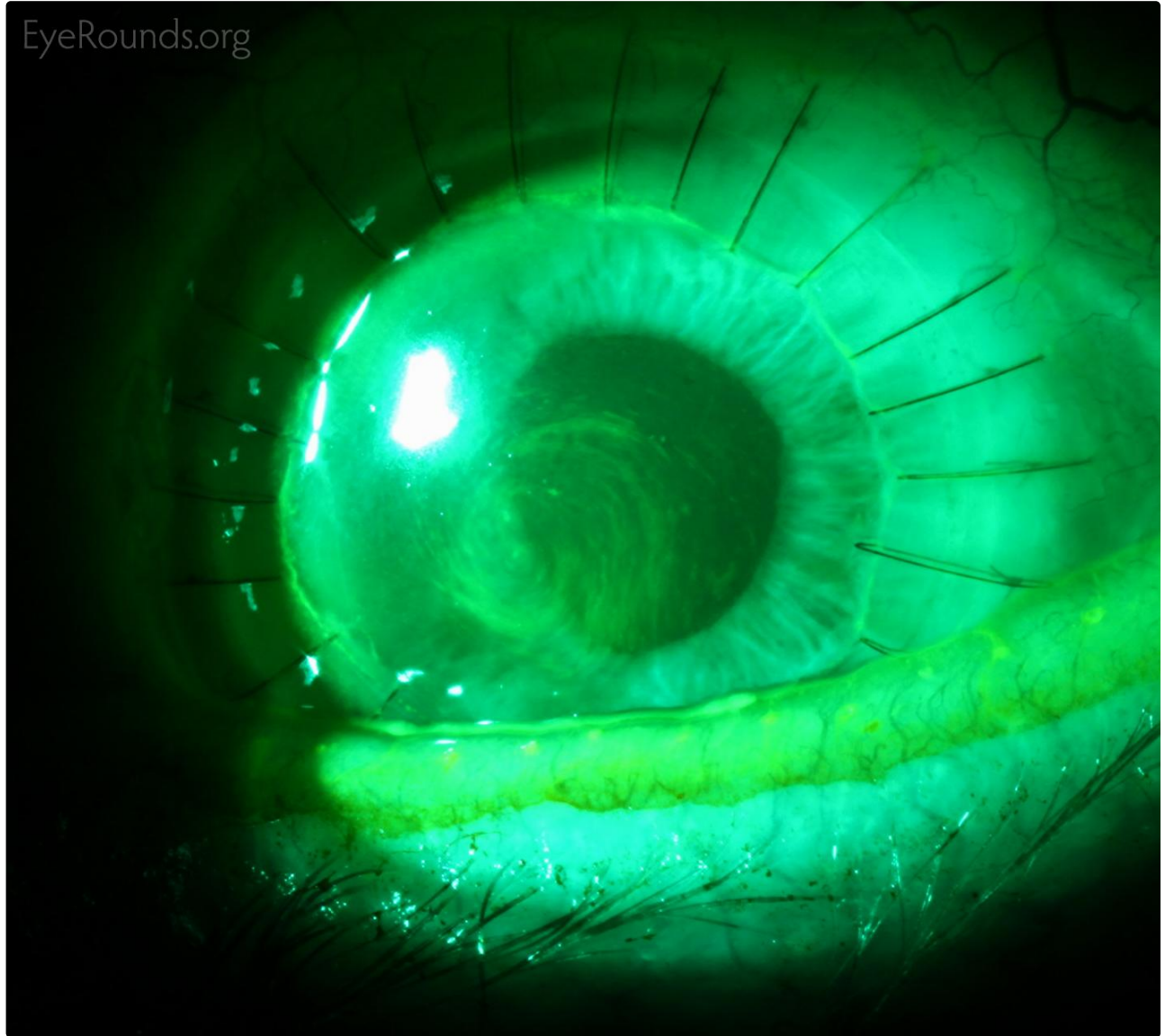


EyeRounds.org

[Enlarge](#)

[Download](#)

EyeRounds.org



 Enlarge

 Download

References:

1. Dua HS, Gomes JA. Clinical course of hurricane keratopathy. Br J Ophthalmol 2000;84:285-288 doi:10.1136/bjo.84.3.285.

Image Permissions:



Ophthalmic Atlas Images by EyeRounds.org, The University of Iowa are licensed under a [Creative Commons Attribution-NonCommercial-NoDerivs 3.0 Unported License](http://creativecommons.org/licenses/by-nc-nd/3.0/).

Address

University of Iowa
Roy J. and Lucille A. Carver College
of Medicine
Department of Ophthalmology and
Visual Sciences
200 Hawkins Drive
Iowa City, IA 52242

[Support Us](#)

Legal

Copyright © 2019 The University of
Iowa. All Rights Reserved
[Report an issue with this page](#)
[Web Privacy Policy](#) |
[Nondiscrimination Statement](#)

Related Links

[Cataract Surgery for Greenhorns](#)
[EyeTransillumination](#)
[Gonioscopy.org](#)
[Iowa Glaucoma Curriculum](#)
[Iowa Wet Lab](#)
[Patient Information](#)
[Stone Rounds](#)
[The Best Hits Bookshelf](#)

EyeRounds Social Media

Follow



Receive notification of new cases,
[sign up here](#)
[Contact Us](#)
[Submit a Suggestion](#)